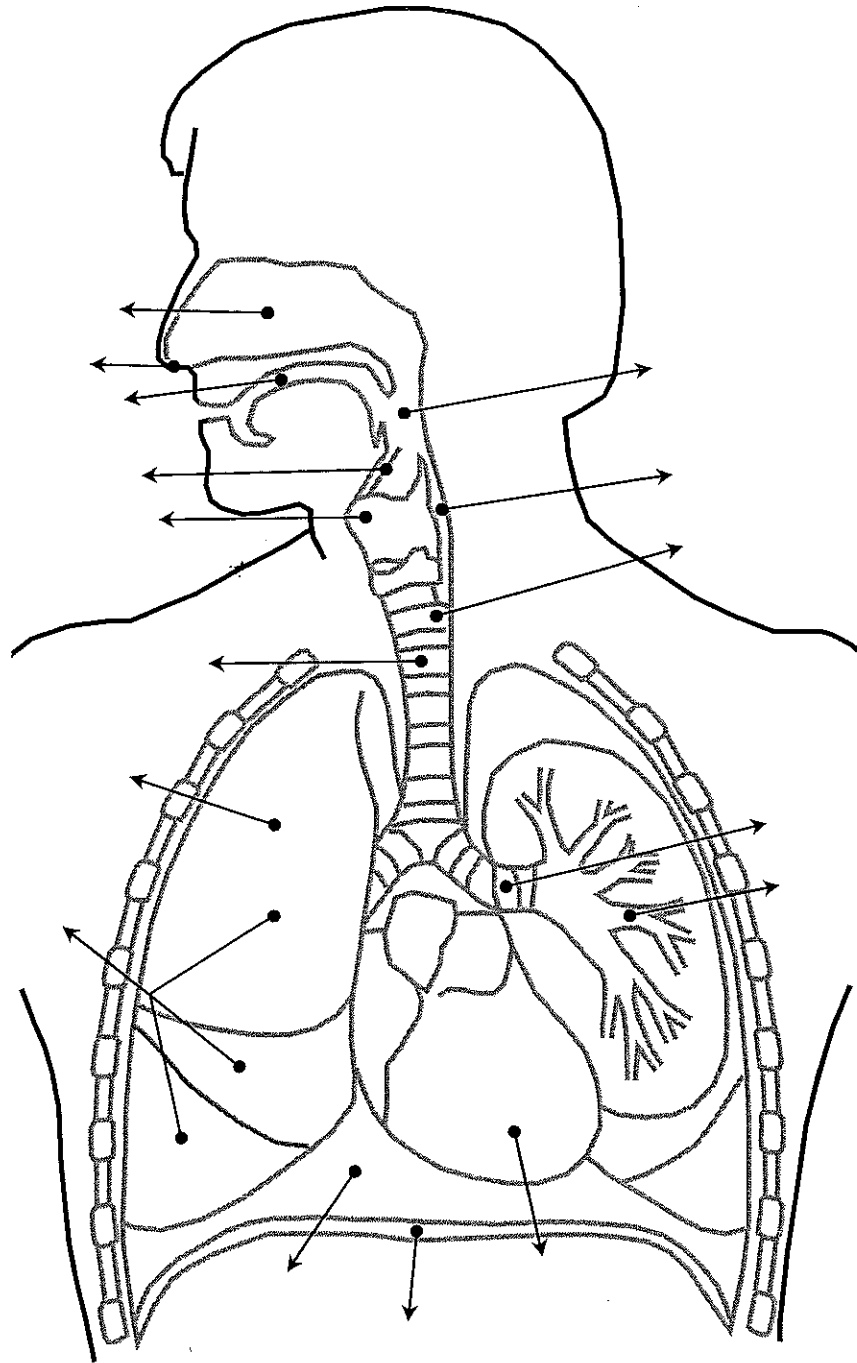
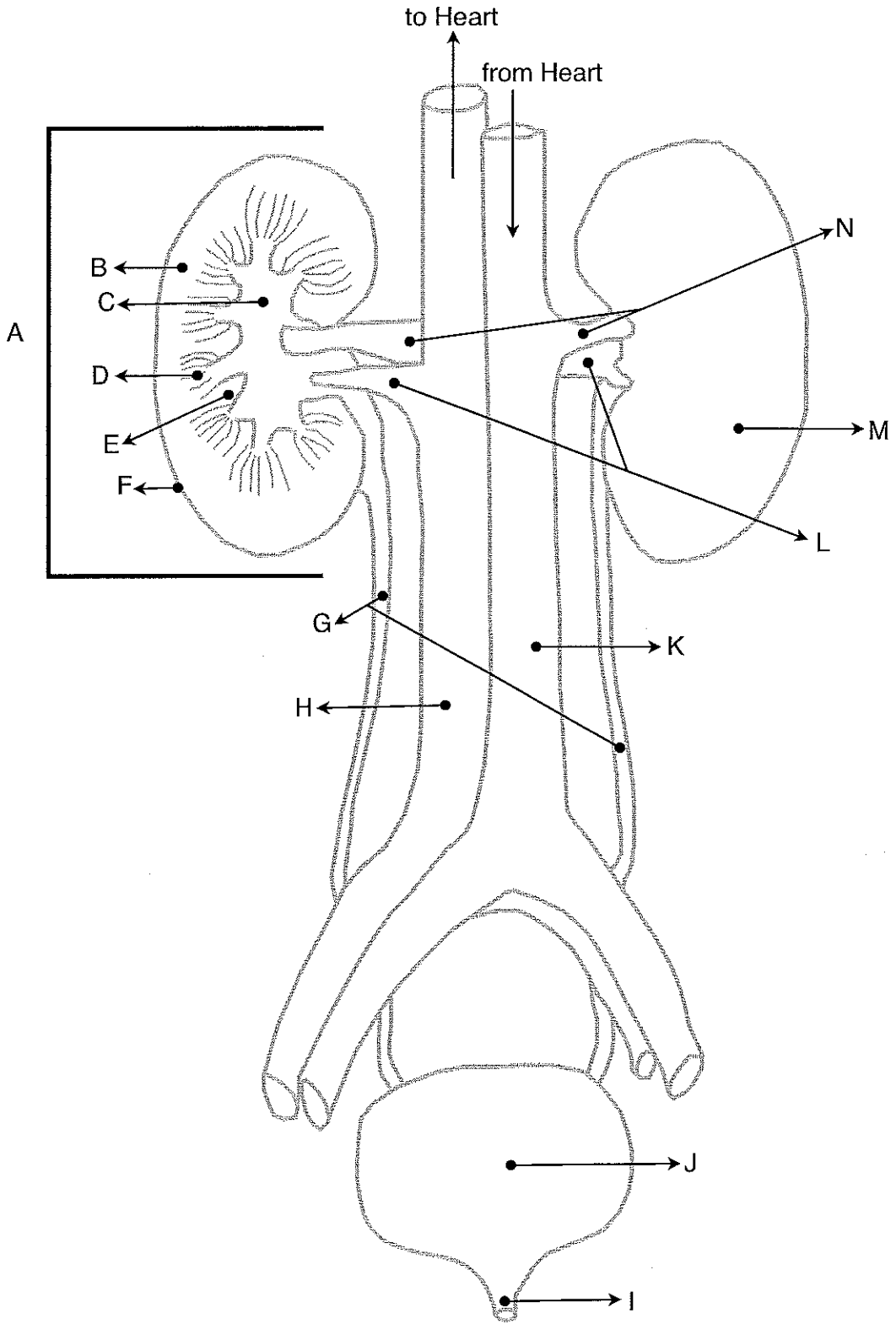
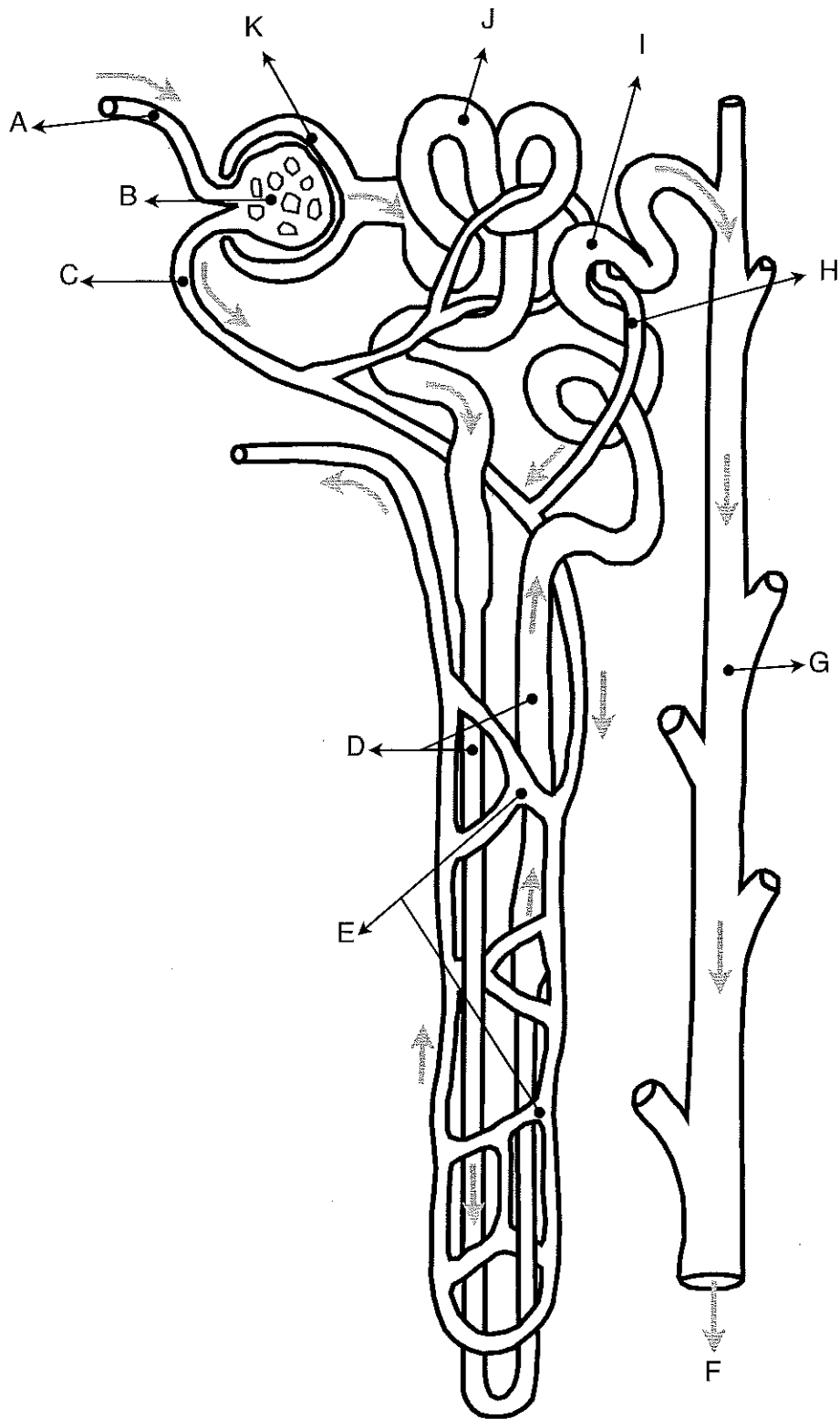


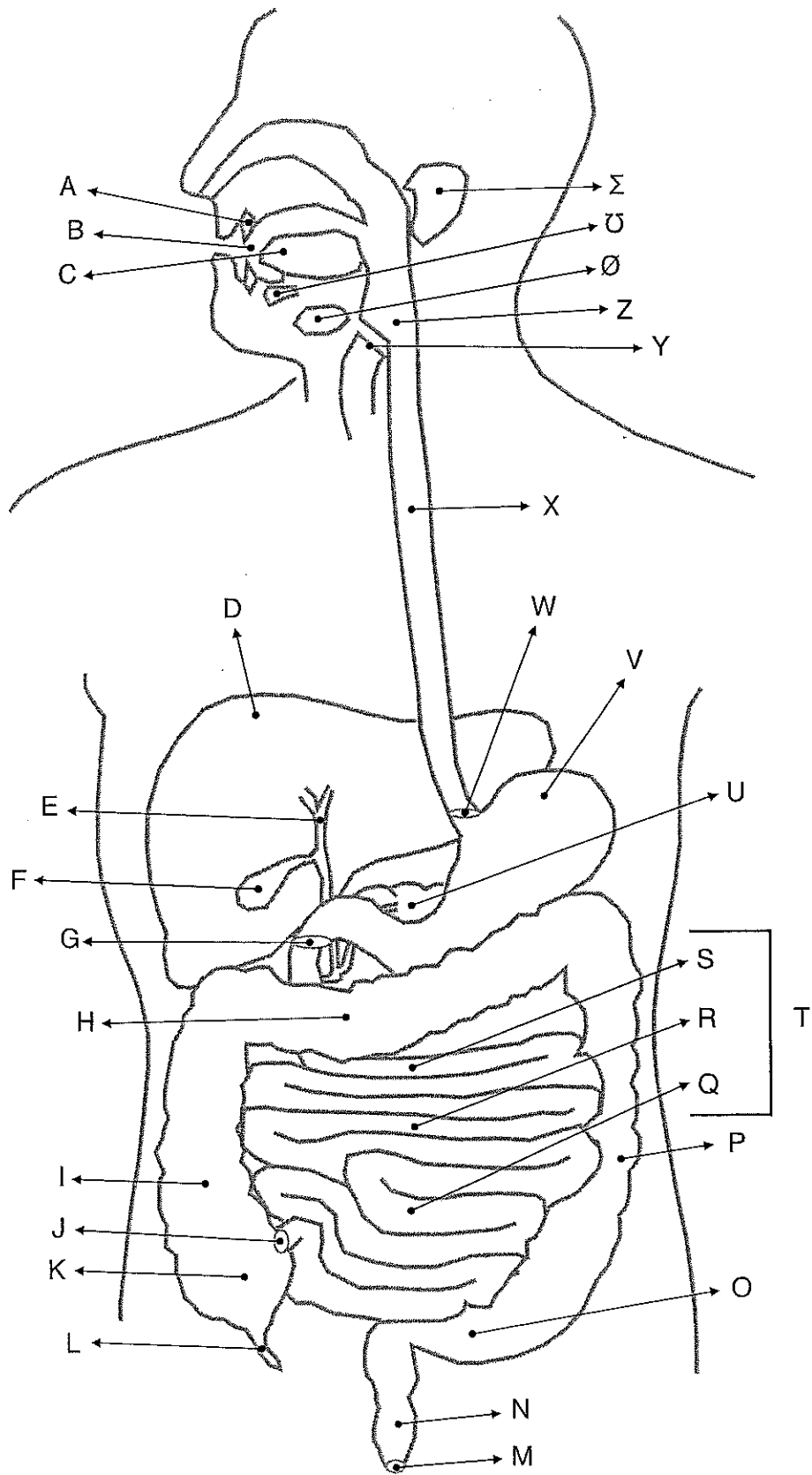
Blood Type	Antigen(s)	Antibody(ies)	Can Donate to	Can Receive From
A-				
B-				
AB-				
O-				
A+				
B+				
AB+				
O+				

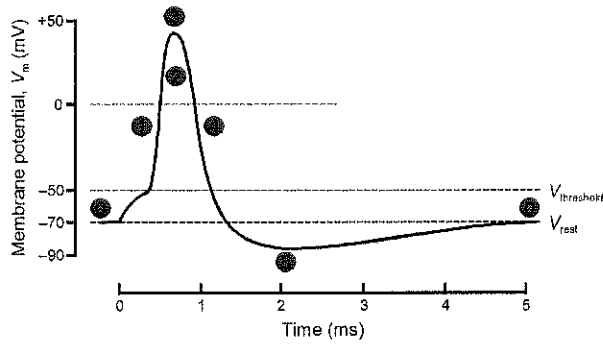
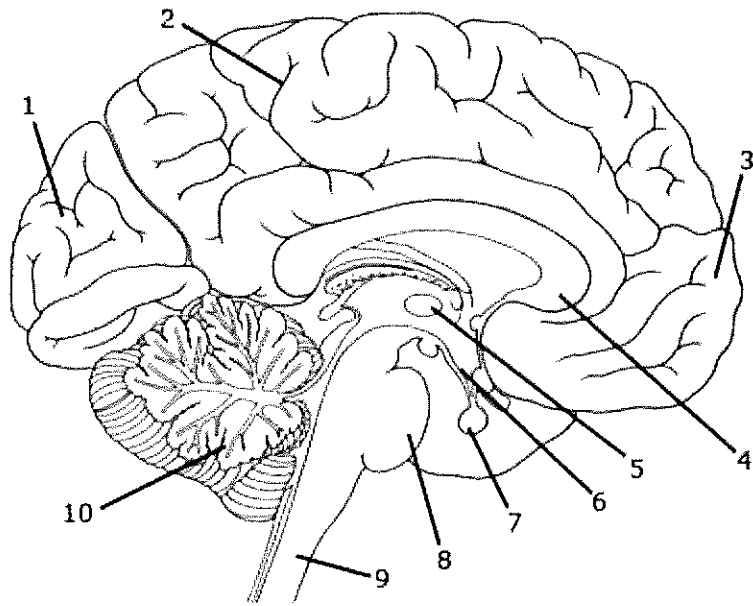
Blood Type	Antigen(s)	Antibody(ies)	Can Donate to	Can Receive From
A-				
B-				
AB-				
O-				
A+				
B+				
AB+				
O+				











© PhysiologyWeb at www.physiologyweb.com

